

# How to use Bluetooth dongle and disable internal Bluetooth

This user guide has been created to educate and inform the reader about using the Bluetooth dongle.

For more information about NeXus, our BioTrace+ software, please visit our website or contact us.

**[www.mindmedia.com](http://www.mindmedia.com)**

The copyright of this document remains with Mind Media BV © 2018, and the contents of it may not be altered or copied. However we do permit unlimited distribution by electronics means of this document in the unaltered digital PDF format in which it is supplied. This document is not intended to replace scientific and clinical literature.

Contents

Introduction..... 3

Using the Bluetooth dongle ..... 4

*Re-pairing NeXus with computer* ..... 8

## Introduction

When the internal Bluetooth of the computer is being used, signal lagging might occur. In case of signal lagging, using the Bluetooth dongle is recommended. This manual provides a step-by-step review of how to disable the internal Bluetooth of the computer and enable the Bluetooth dongle.

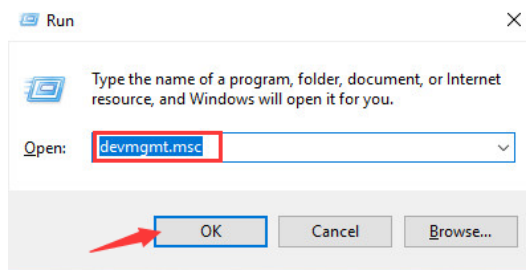
## Using the Bluetooth dongle

Insert the Bluetooth dongle to the computer USB port.

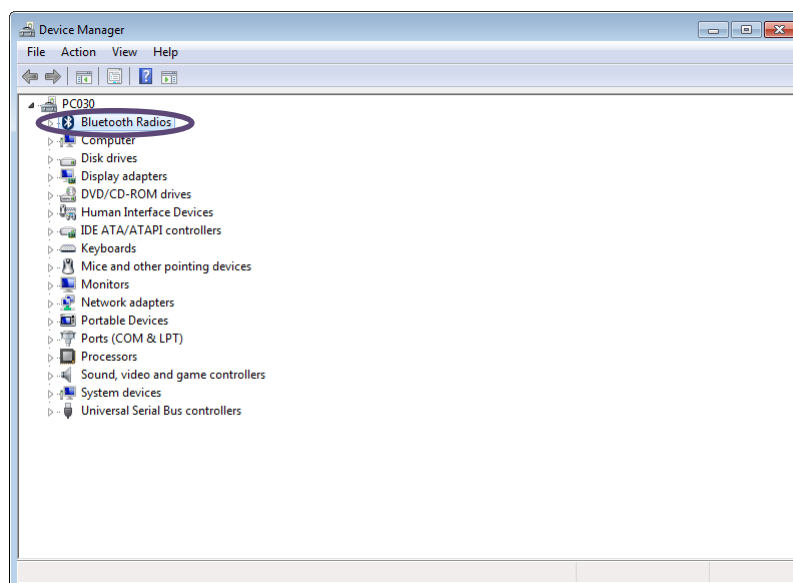
Open the Device Manager:

Press **Windows logo key** and **R** at the same time to invoke the run box.

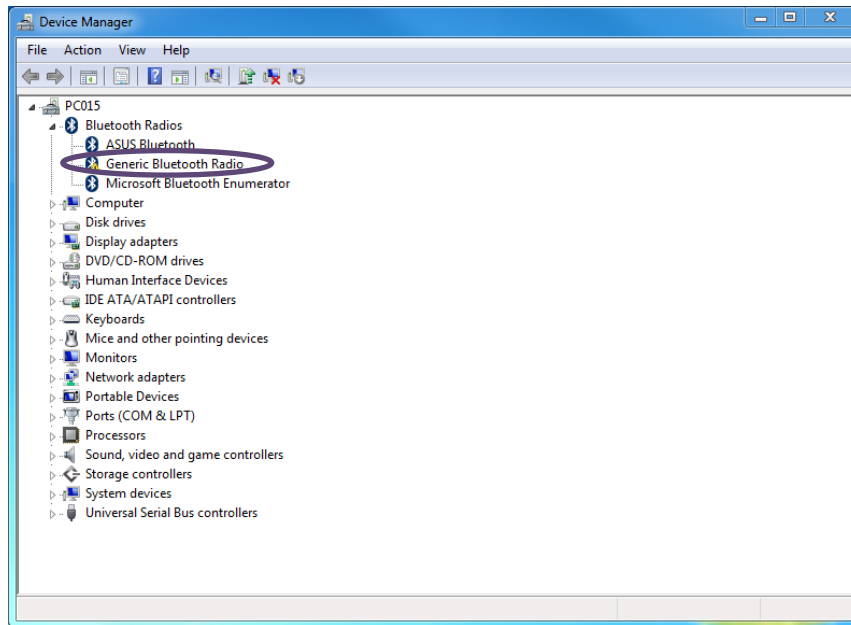
Type **devmgmt.msc** and click **OK**. The Device Manager will be opened.



Open **Bluetooth Radios**.



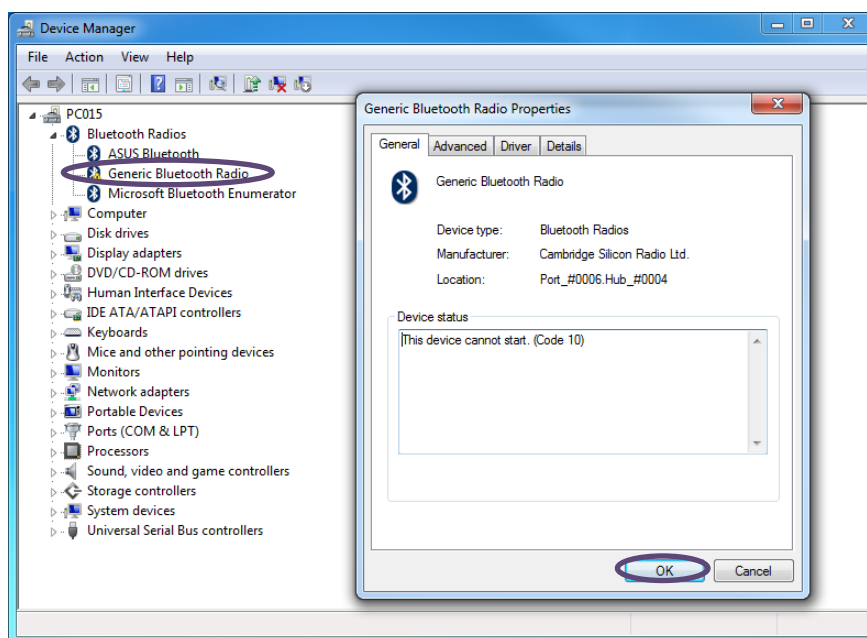
The **Generic Bluetooth Radio** corresponds with the Bluetooth dongle.



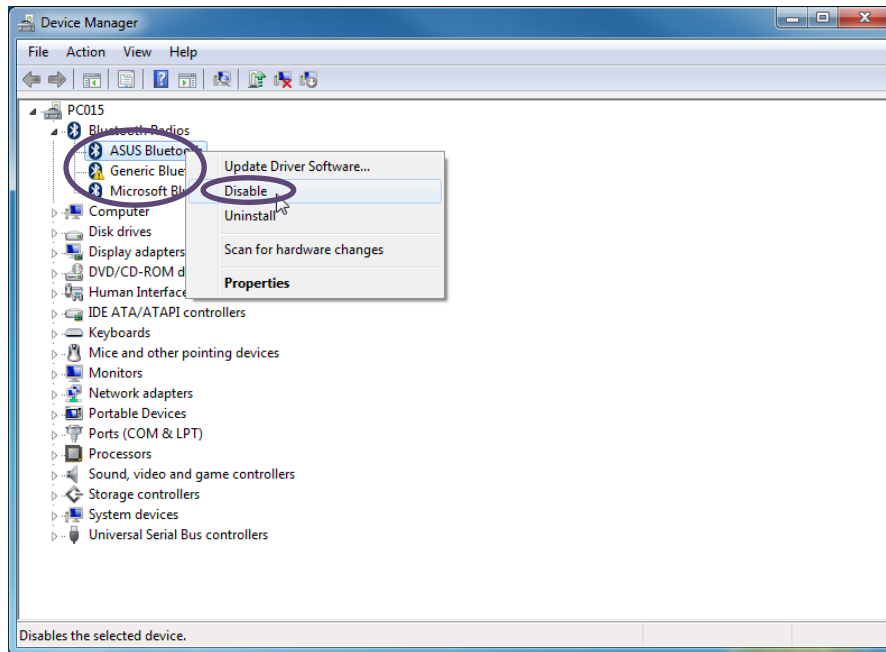
Right click **Generic Bluetooth Radio** > **Properties**.


The device status 'This device cannot start' could appear.

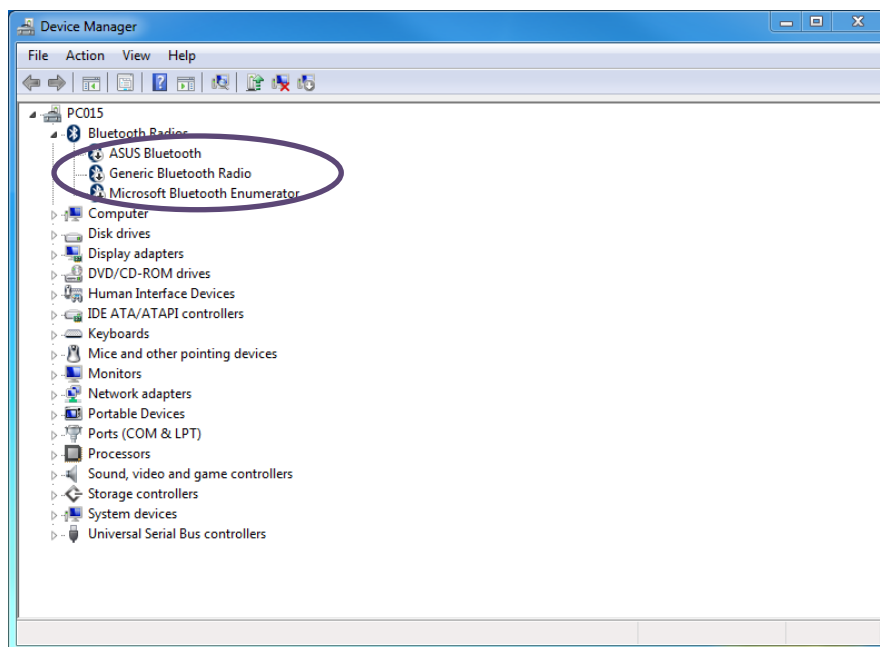
Click **OK**.



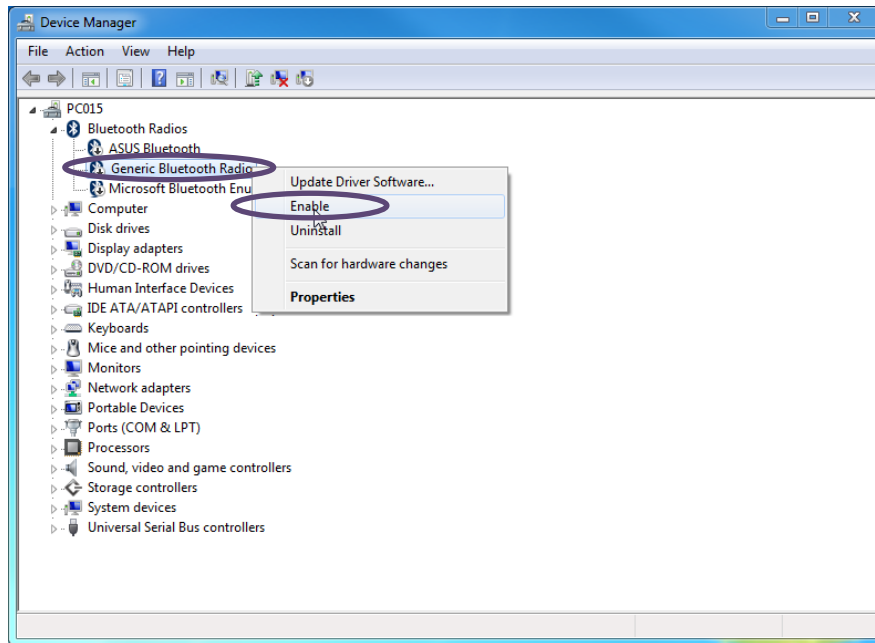
Disable all Bluetooth Radios separately by right clicking on each Bluetooth Radio > **Disable**.



All Bluetooth Radios are disabled now. This can be recognized by the Bluetooth sign .



Enable the **Generic Bluetooth Radio** by right clicking > **Enable**.



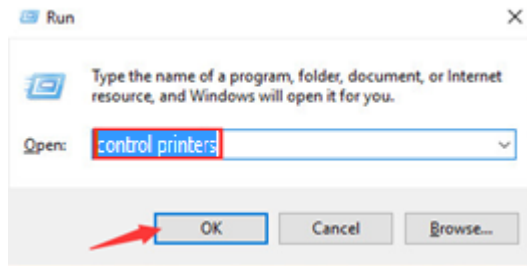
Eventually the NeXus has to be re-paired with the computer.

## Re-pairing NeXus with computer

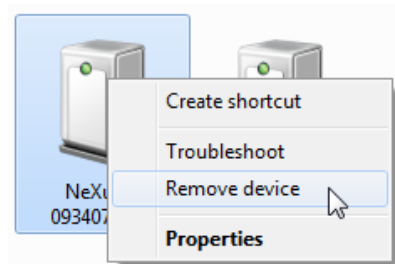
Open the Devices and Printers:

Press **Windows logo key** and **R** at the same time to invoke the run box.

Type **control printers** and click **OK**. The Devices and Printers will be opened.



Right click the NeXus device and select **Remove device**. The device will be removed.



Click **Add a device** and select the NeXus device. Make sure the NeXus is turned on.

Add a device

Select the Nexus device.

Enter the requested passcode for the device. These are the last 4 digits of the serial number displayed on the screen.